

MasterMover®

SM100+ SS

Battery powered electric tug



SM100+ SS



Overview

The Stainless Steel range of electric tugs delivers the same level of performance as our mild steel ranges, but with the added benefit of seamlessly integrating into sterile environments.

Whether it's a biopharmaceutical cleanroom suite or a food manufacturing facility, our stainless steel electric tugs remove manual handling and drive operational efficiency without compromising the cleanliness of your facility.

Constructed from high-grade 316 stainless steel and with IP ratings of up to IP55 available, stainless steel electric tugs are ideally suited to the stringent requirements of sterile environments.

The Stainless Steel range of electric tow tugs facilitate the controlled movement of loads in tight spaces, with an array of coupling options available that put load security and safety at the forefront.

Key Features

Safety

- Audible horn, flashing safety light, emergency stop button and anti-crush button
- Speed control with an optional two-speed selector switch for maximum control
- Complete load security with automatic braking

Power

- Optimised motor output to optimise speed and power
- Maintenance-free, interchangeable battery options
- Powerful, effective, traction generation for smooth performance

Performance

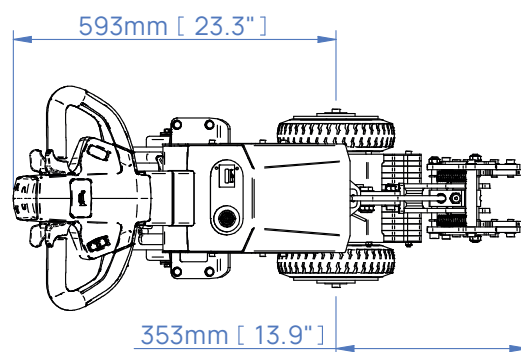
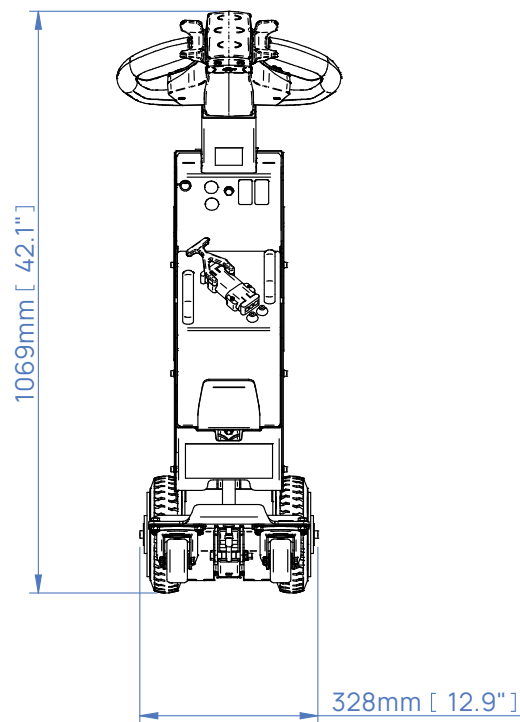
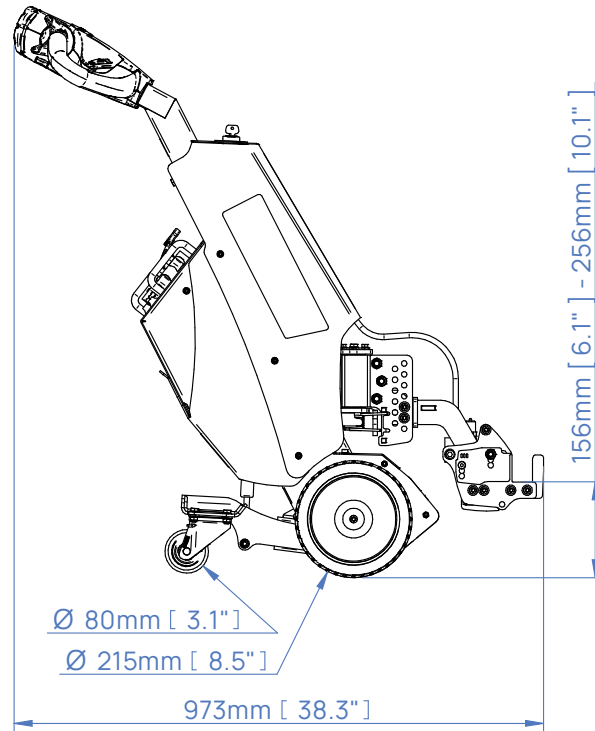
- Powerful weight-moving capabilities suited to every application
- Maximum traction even on wet floors
- Compact and manoeuvrable to deliver precise movements in even the tightest of spaces

Connection

- Secure coupling systems to deliver the controlled movement of loads
- A range of coupling options available to connect to a variety of loads
- Custom couplings available



Dimensions

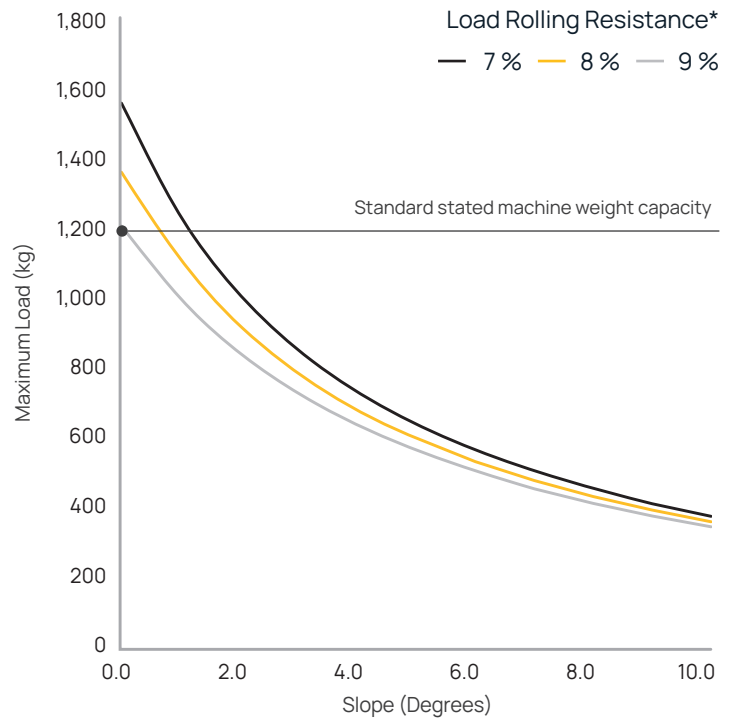


Slope Performance

The force required to move a load is based on load weight, slope angle and floor condition. Movement on a slope increases the force required to safely start, stop and move the load.

If your application involves moving a load up or down a slope, speak to our team who will be happy to advise on which machine will meet your requirements.




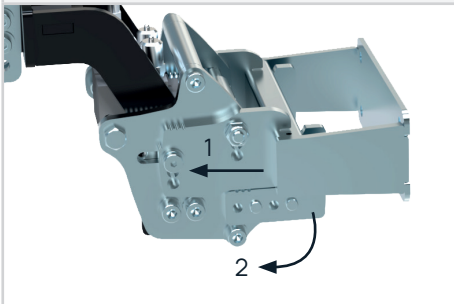
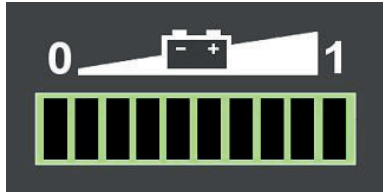

* Variables that affect rolling resistance include the quality of floor/terrain and the type/condition/quality of castor wheels.






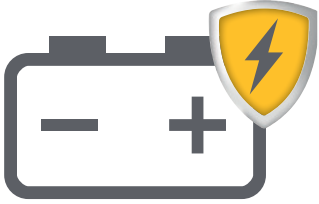
In Application: SmartMover Stainless Steel



Standard Safety Features

Anti-Crush Button	Warning Horn	Automatic Parking Brake
		
Two Stage Lock and Load	Battery Discharge Indicator	Key Switch
		

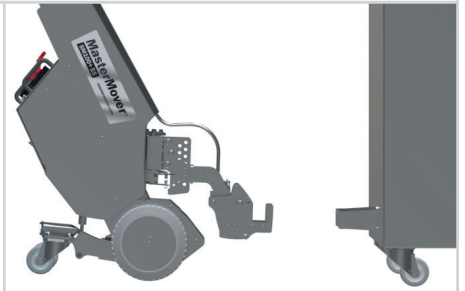
Machine Options

<p>Additional AGM Battery Z55-00300</p>	<p>Flashing Light & Motion Beeper Z55-00501</p>	<p>Two Speed Selector Switch Z55-00500</p>
 A rectangular, silver-colored metal battery box with a black handle on the front and a black terminal on top.	 A vertical black cylindrical device with a yellow flashing light at the top and a silver mounting post at the bottom.	 A close-up of a black plastic control panel featuring a yellow rectangular selector switch with two gear icons.
<p>Battery Protection System</p>		
 An icon of a battery with a minus sign on the left and a plus sign on the right, with a yellow shield containing a lightning bolt symbol positioned over the right side.		

Couplings

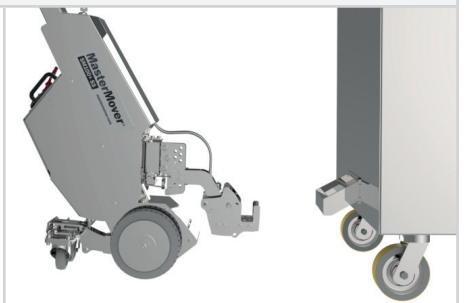
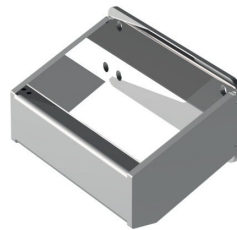
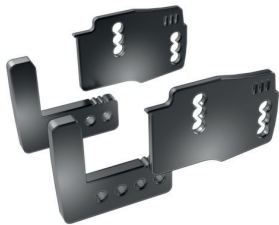
A-Frame

Z55-00600 male | Z55-00700 female - straight



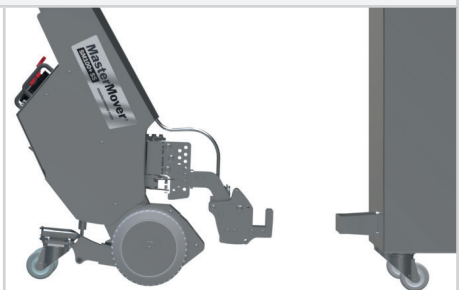
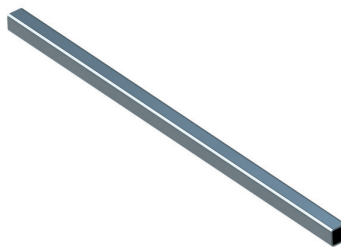
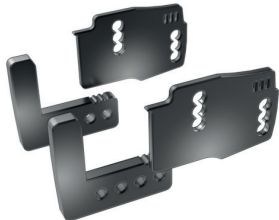
A-Frame

Z55-00600 male | Z55-00701 female - angled



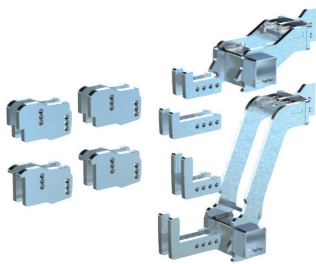
Box Section

Sizes 20x20 to 75x75mm



Variable Kit

Z55-00601 male



Custom Engineering

We understand that every application is different. Whether it's a custom coupling to connect to your load, modifying our electric tugs to work in a challenging environment, or designing an entirely new solution for your application, our Customer Engineering team are here to help.

For more information on our custom engineering capabilities, please visit: mastermover.com/custom-solutions

If you'd like to discuss your requirements, speak to your sales representative or email: sales@mastermover.com

Technical Specification

Machine	
Product code	Z55-00100
Maximum load (on castors on rails)	1,200 kg 4,800 kg
Maximum force (push pull)	1,079 N 1,079 N
Machine weight	72 kg
Battery weight (standard)	16 kg
Combined machine & battery weight (standard)	88 kg
Drive type	Twin Electric Motor
Braking	Regenerative
Parking brake	Electromagnetic
Drive wheel type	Non-Marking Rubber
Castor wheel type	Non-Marking Polyurethane
Drive wheel diameter	220 mm
Drive motor power	2 x 0.22 kW
Controller type	DC
Standard machine speed (Without two speed selector switch)	4.2 KPH
Hare mode speed (With two speed selector switch)	5.4 KPH
Tortoise mode speed (With two speed selector switch)	1.8 KPH
Maximum slope	30°
Voltage	24 v
Noise level	Motor ≤80 dBA Flashing light ≤85 dBA Horn ≤112 dBA
Metal work finish	Stainless Steel 316 grade 240-grit abrasive to 0.6μ satin finish
IP rating	IP44
Hydraulic Specification	
Maximum Clamp Force at the Coupling	387 kg
AGM Battery	
Product code	Z55-00300
Battery pack capacity	22 Ah
Maximum distance per charge*	7.7 km
Charge time	4 hrs 30 mins
External Charger	
Product code	Z55-00400
Input voltage	85 - 265 v
Hertz	50 - 60 Hz
Amps	5 A
Phase (single, three)	Single
IP Rating	IP30

Technical Specification

Lithium Battery	
Product code	Z55-00301
Battery pack capacity	39 Ah
Maximum distance per charge*	15.5 km
Charge time (External charger)	1 hrs 45 mins
External Charger	
Product code	Z55-00401
Input voltage	85 - 265 v
Hertz	50 - 60 Hz
Amps	25 A
Phase (single, three)	Single
IP rating	IP30
Coupling	
A-Frame Coupling - Straight (male I female)	Optional
A-Frame Coupling - Angled (male I female)	Optional
Box Section	Optional
Variable Kit	Optional
Safety	
Key Switch	Standard
Automatic Parking Brake	Standard
Battery Discharge Indicator	Standard
Anti-Crush Button	Standard
Warning Horn	Standard
Two Stage Lock to Load	Standard
Options	
Additional AGM Battery	Optional
Flashing Safety Light and Motion Bleeper	Optional
Two Speed Selector Switch	Optional
Battery Protection System	Standard

MasterMover®

mastermover.com

© Copyright 2024

UK
CA   