

## MQC45/50

MQC45/50 multidirectional forklift truck has a load capacity of 4.5/5.0 tons, the mast can be moved forward or retracted as a whole, equipped with widened fork positioner and independent control of four-wheel steering, which can travel straight, sideways, diagonally, and rotate in place. It has a smaller aisle when traveling sideways, which is especially suitable for working conditions of long materials.

Apply to:

- Working conditions for long materials
- Stacking in narrow aisles



## Features of MiMA Electric Multi-directional Forklift

1. Dual drive braking: better braking effect, able to be used on slippery and icy ground, safer operator operation;
2. Ergonomic design: integrated handle and multifunctional intelligent dashboard with wheel display function for more comfortable and convenient operation;
3. High surplus capacity mast: High precision mast with the same excellent capacity at ultra high level load.
4. High endurance: Full AC system design, using AC brushless motor, with high efficiency and energy saving, to meet the requirements of many operations under heavy working conditions.
5. High operating comfort: equipped with electronic steering, which makes steering more effortless, reduces fatigue intensity and improves efficiency.



## Technical data

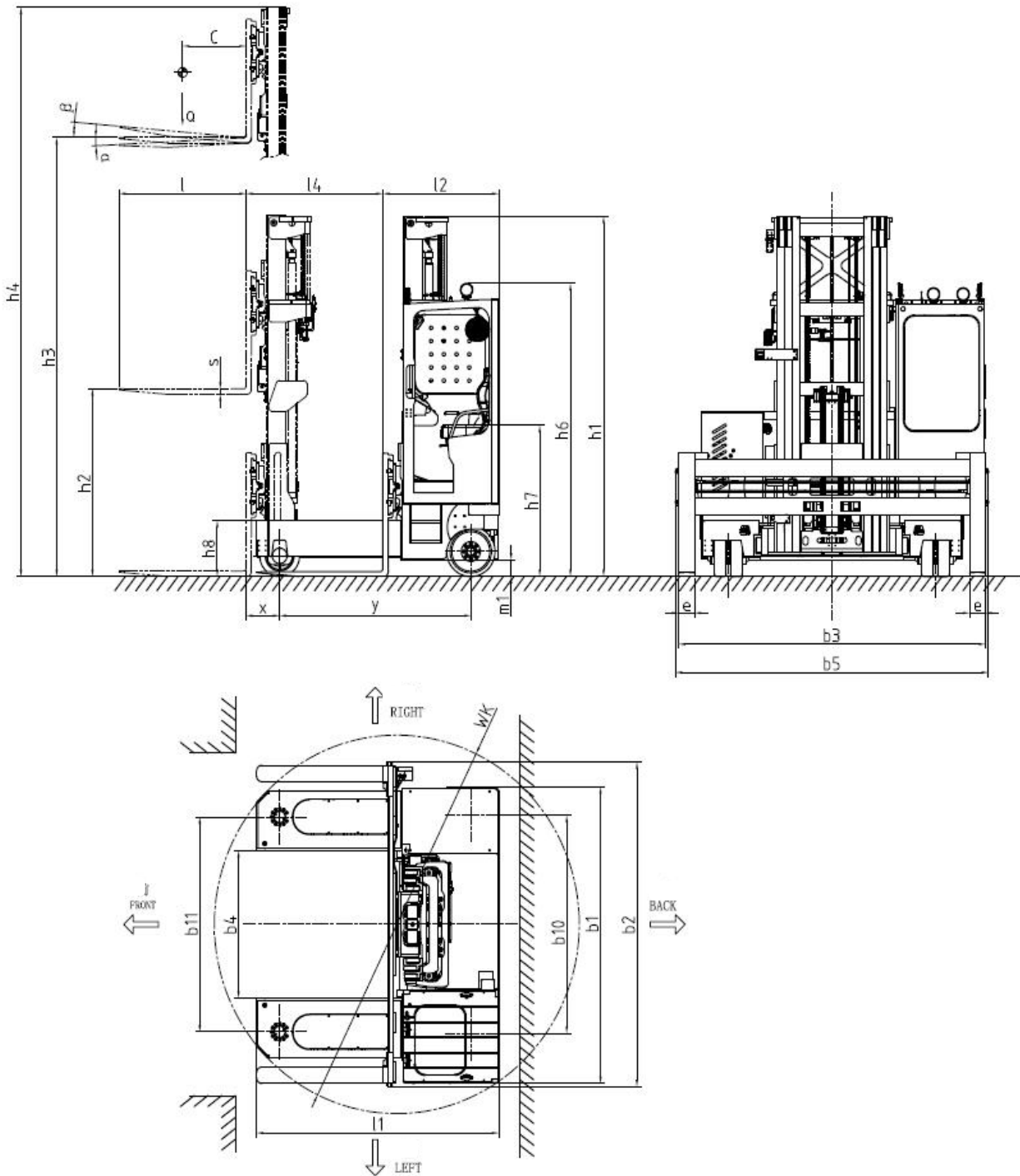
Characteristics	1.1	Manufacturer		MiMA	MiMA
	1.2	Model		MQC45	MQC50
	1.3	Power Type		Battery	Battery
	1.4	Operation		Seated	Seated
	1.5	Load capacity	Q(kg)	4500	5000
	1.6	Load center distance	C(mm)	600	600
	1.7	Front overhang	x(mm)	330	330
	1.8	Wheelbase	y(mm)	1800	1800
Weights	2.1	Service weight(incl. battery)	kg	7750 <sup>2</sup>	7750 <sup>2</sup>
	2.2	Axle loading, laden front/rear	kg	6620/5630	6890/5860
	2.3	Axle loading, unladen front/rear	kg	5820/1930	5820/1930
Wheels	3.1	Wheel type, drive side/load side		Solid rubber	Solid rubber/Polyurethane
	3.2	Load wheel size	in/mm	15×5-11.25/φ381×127	φ380×127
	3.3	Drive wheel size	in/mm	18×9-12.125/φ457×229	18×9-12.125/φ457×229
	3.4	Balance wheel	mm	/	/
	3.5	Wheels,number front/rear (X=driven)		4 / 2X	4 / 2X
	3.6	Track width, rear	b10(mm)	2050	2050
	3.7	Track width, front	b11(mm)	1964	1964
Dimensions	4.1	Mast tilt angle front/rear	$\alpha/\beta(^{\circ})$	2/4	2/4
	4.2	Mast retracted height	h1(mm)	refer to mast specifications	refer to mast specifications
	4.3	Free lift height	h2(mm)	refer to mast specifications	refer to mast specifications
	4.4	Lift height	h3(mm)	refer to mast specifications	refer to mast specifications
	4.5	Mast extended height	h4(mm)	refer to mast specifications	refer to mast specifications
	4.6	Cabin height (with/without light)	h6(mm)	2680/2550	2680/2550
	4.7	Seat height	h7(mm)	1375	1375
	4.8	Support arms height	h8(mm)	500	500
	4.9	Overall length	l1(mm)	2300	2300
	4.10	Overall width	b1/b2(mm)	2710/2960	2710/2960
	4.11	Unladen in-situ rotation diameter	WK(mm)	3400	3400
	4.12	Fork dimensions	l/e/s(mm)	1200/150/50	1200/150/50
	4.13	Body rear width	b5(mm)	2960	2960
	4.14	Fork outside spread	b3(mm)	560~2900	560~2900
	4.15	Support arms inner width	b4(mm)	1340	1340
	4.16	Fork carriage width	l4(mm)	1300	1300
	4.17	Min. ground clearance	m1(mm)	150	150
Perforance	5.1	Sideways travelling speed, laden/unladen	km/h	7.0~8.0	7.0~8.0
	5.2	Straight travelling speed, laden/unladen	km/h	6.0~7.0	6.0~7.0
	5.3	Lift speed, laden/unladen	mm/s	190/220	190/220
	5.4	Lowering speed, laden/unladen	mm/s	300/142	300/142
	5.5	(Straight driving gradeability, laden/unladen(S2-5min)	%(tan $\theta$ )	8/8	8/8
	5.6	Sideways driving gradeability, laden/unladen(S2-5min)	%(tan $\theta$ )	8/8	8/8
	5.7	Service brake		Electromagnetic	Electromagnetic
Drive	6.1	Drive motor, rating S2=60	kw	7AC	7AC
	6.2	Lift motor, rating S3=15%	kw	25.4AC	25.4AC
	6.3	Battery voltage/nominal capacity	V/Ah	80/500	80/500
	6.4	Battery weight	kg	1342	1342
	6.5	Steering System		EPS	EPS
Others	7.1	Battery replacement method		Hoisting	Hoisting

1.Standard with pitch fork, optional fork sensing function

2.Standard model data, depending on the configuration will change

3.Optional continuous switching function

## 2D view



## Mast specification

Duplex mast							
Mode	MQC45SQ	45SQ-45	45SQ-50	45SQ-55	45SQ-60	45SQ-65	45SQ-70
Lift height	h3(mm)	4500	5000	5500	6000	6500	7000
Mast extended height	h4(mm)	5635	6135	6635	7135	7635	8135
Mast retracted height	h1(mm)	2580	2745	2910	3125	3290	3505
Free lift height	h2(mm)	1425	1590	1755	1970	2135	2350
Triple full free mast							
Mode	MQC50SQ	50SQ-45	50SQ-50	50SQ-55	50SQ-60	50SQ-65	50SQ-70
Lift height	h3(mm)	4500	5000	5500	6000	6500	7000
Mast extended height	h4(mm)	5635	6135	6635	7135	7635	8135
Mast retracted height	h1(mm)	2580	2745	2910	3125	3290	3505
Free lift height	h2(mm)	1425	1590	1755	1970	2135	2350

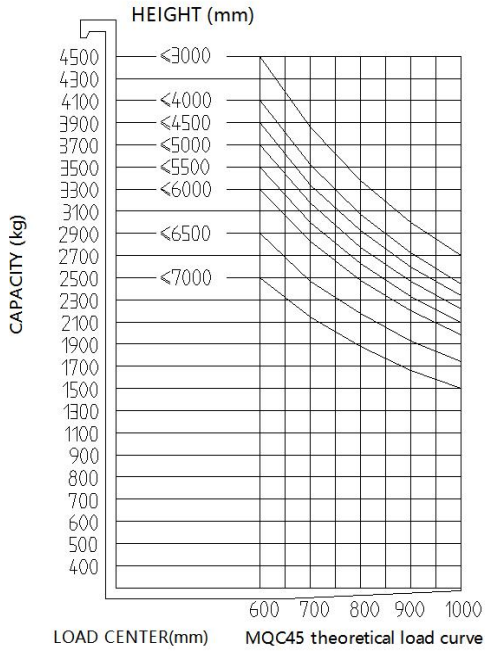
Note[1]: The above mast series are equipped with fork positioner as standard;

[2]: The free lifting height is the lifting height when the mast is not protruding;

[3]: The above mast series with camera and screen display as standard;

# Load chart

**MQC45 Load curve**



**MQC50 Load curve**

