

MQC35

Multi directional forklift

Long Material Handling and Storage Solutions

MiMA

Min. space Max. performance

BANYITONG SCIENCE & TECHNOLOGY DEVELOPING CO.,LTD.
Add: Crossing of Daihe Road and Cailun Road,Hefei,China
Tel: +86 551 6219 3112
E-mail: sales@mimachina.com
Website: www.mimaforklift.com

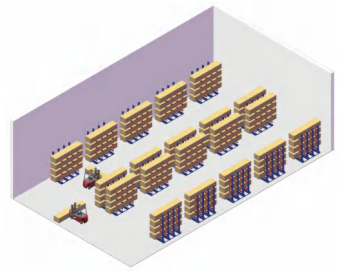


Website

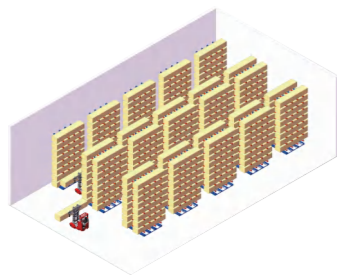
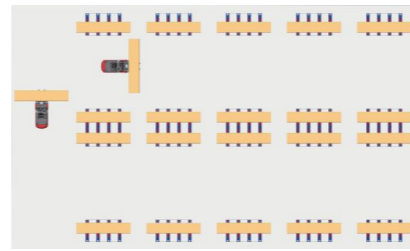
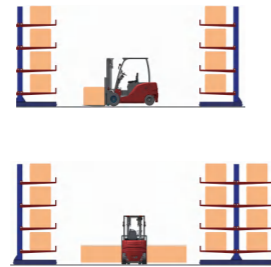


Narrow Aisle

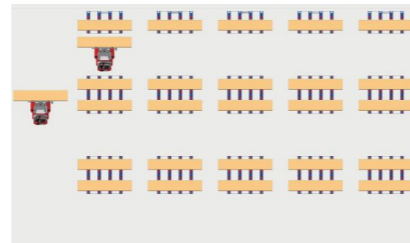
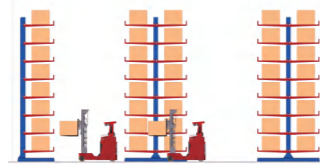
6 meters long material, rack width can be as low as 2800mm



Electric counterbalanced forklift

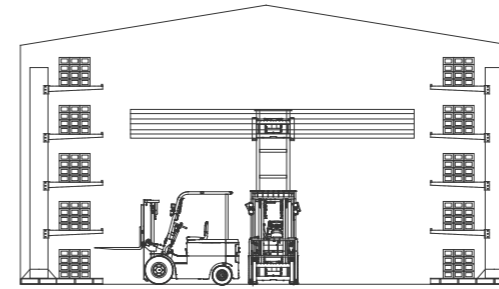


Multi directional forklift

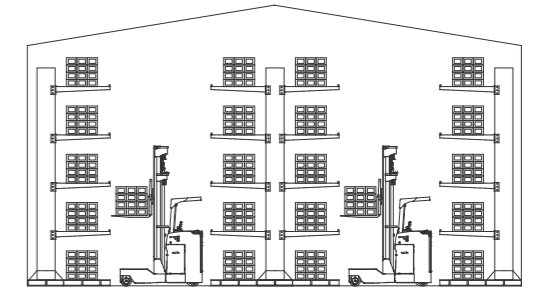


High Storage Capacity

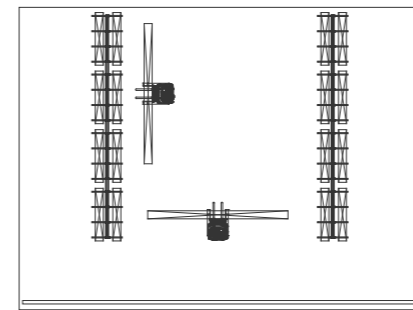
Compared with the traditional rack layout, the storage capacity can be increased by at least 2 times.



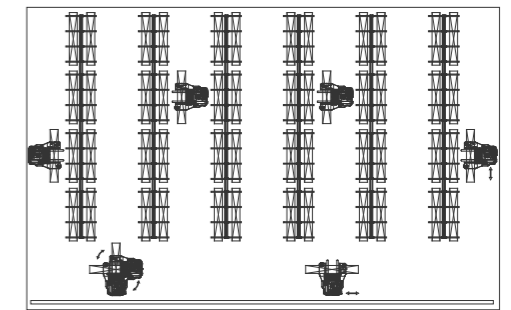
The longer the material length, the larger the aisle demand. It's serious waste of space.



The material length is no effect on the aisle width. The multi directional forklift has a side travel mode.



Long material storage mode
Counterbalanced forklift



Long material storage mode
Multi direction forklift

Multi-directional Forklift VS Counterbalanced Forklift

Multi directional forklift

- The same storage area, the storage capacity increases by more than 200%
- Rack height has Increased by 100% ($\geq 8M$)
- Aisle width has decreased by more than 60%
Note: The longer the material, the more obvious the advantage.
- Stacking operation without turning, more convenient
- Long material handling and stacking, more safer

Electric counterbalanced forklift

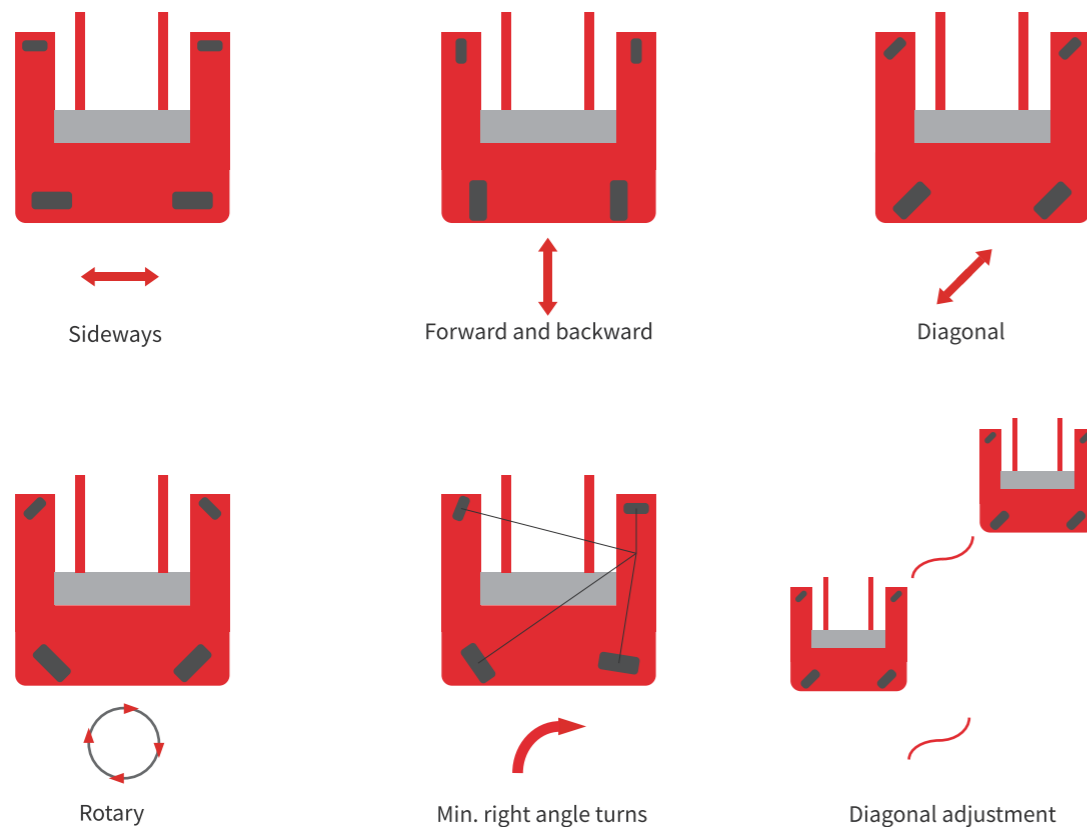
- Very few pallet positions
- Large rack aisle width
- Low rack height, $\leq 5M$
- Unsafety



Multi Driving Modes

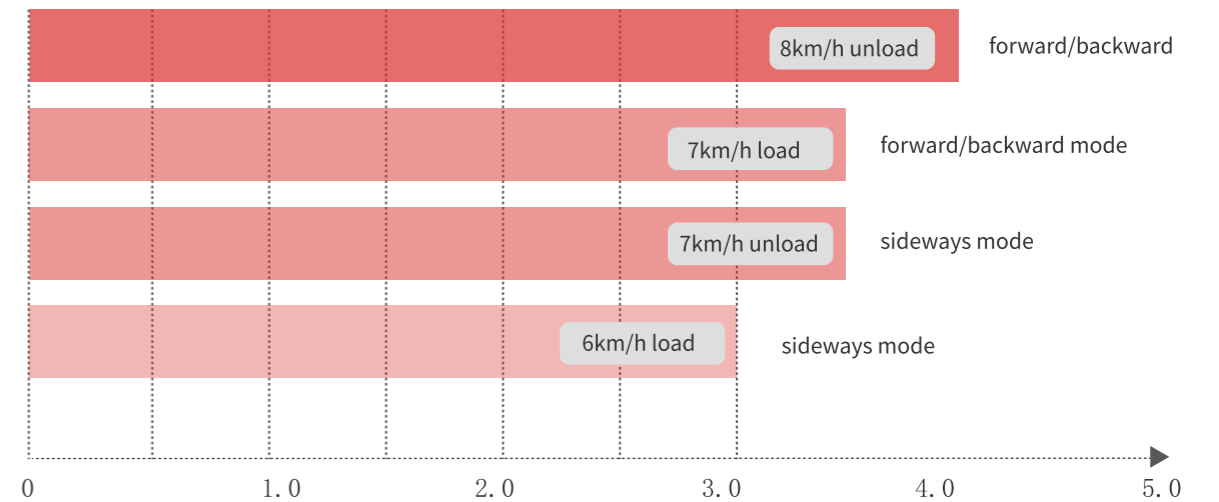


MQC35 series with 3,500kg rated capacity and 3,000-8,000mm lifting height. The vehicle has multi driving modes, different modes can be quickly switched with one button. It can be flexibly driven in various indoor/outdoor working conditions, ensuring high efficiency and safety for long material handling.



High Speed Driving

High Speed



Two sets of super-power AC drive motors provide abundant power. Two sets of drive assemblies are equipped with electromagnetic brakes, dual brake mode ensures excellent braking performance.



Indoors and Outdoors Using

Various Configuration

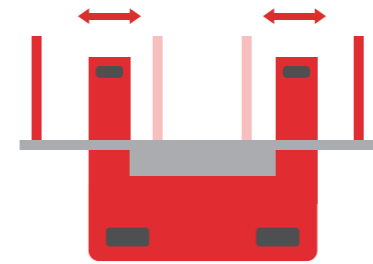


Solid rubber tire Solid rubber tire Dual drive, dual electromagnetic braking

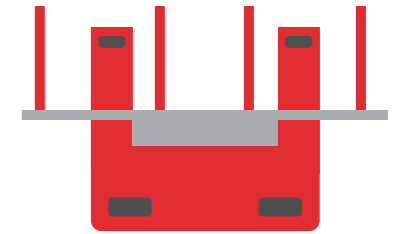
The forklift is equipped with front and rear solid rubber tires, which can adapt to various indoor and outdoor ground conditions. The high chassis design has excellent trafficability. Besides, the forklift adopts a high-power AC drive motor with a better climbing performance.



MQC35 series multi directional forklift, the chassis is a dual-drive four-pivot structure with strong power. MQC35 is equipped with an electric steering system as standard. The mast system adopts a special semi-frame structure design for multi directional forklift, and the fork frame system is also specially designed to ensure the stability of the mast and forks when handling and storing long materials, with stable movements and safer operation.



Fork Positioner (Standard)



Four forks (option)



Integrated handle Easy operation (Standard)



Smart display (Standard)



270 ° good vision, safe operation



Seated driving, more comfortable



Lead-acid battery/lithium battery



Specification

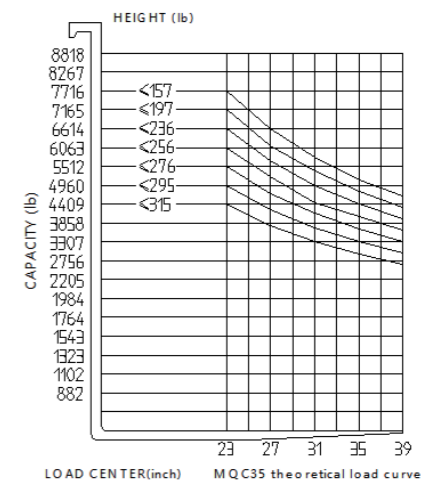
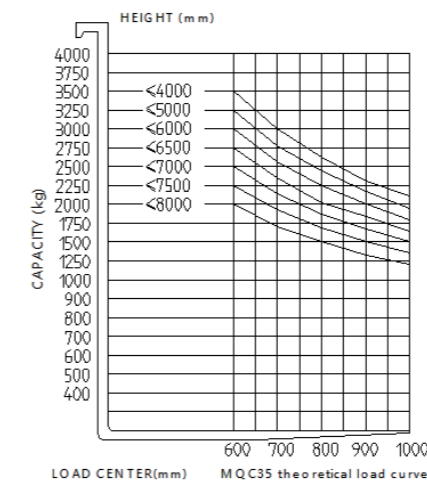
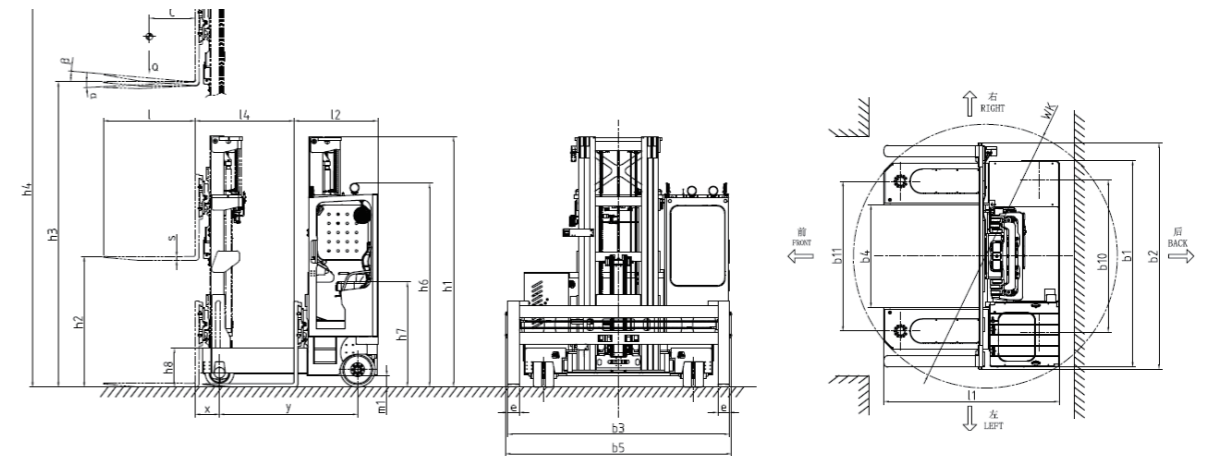
Standard			
1.1	Manufacturer		MiMA
1.2	Model		MQC35
1.3	Power type		Battery
1.4	Operation type		Seated
1.5	Load capacity	Q (kg)	3500
1.6	Load centre	c (mm)	600
1.7	Front overhang	x (mm)	325
1.8	Wheelbase	y (mm)	1800
Weights			
2.1	Service weight (incl.battery)	kg	6370 ^o
Tyres			
3.1	Tyre type		Solid rubber tire
3.2	Tyre size, front		14×5/φ356×127
3.3	Tyre size, rear		16×7/φ406×178
3.4	Auxiliary tyre	mm	-
3.5	Number of wheels, front/rear, X=drive		4/2X
3.6	Tread, drive side	b11 (mm)	1712
3.7	Tread, load side	b10 (mm)	1760
Dimensions			
4.1	Mast tilt, forward/backward	α/β (°)	2/4
4.2	Mast closed height	h1 (mm)	3043
4.3	Free lift height	h2 (mm)	1958
4.4	Lift height	h3 (mm)	6000
4.5	Mast extended height	h4 (mm)	7135
4.6	Overhead guard height	h6 (mm)	2674/2547
4.7	Seat height	h7 (mm)	1365
4.8	Leg height	h8 (mm)	475
4.9	Overall length	l1 (mm)	2300
4.10	No-load in-situ rotation diameter	WK(mm)	3210
4.11	Overall width	b1/b2 (mm)	2435/2860
4.12	Fork size	s / e / l (mm)	50/150/1200
4.13	Fork outside width	b3(mm)	560/2800
4.14	Inner distance between legs	b4 (mm)	1150
4.15	Body rear width	b5(mm)	2860
4.16	Forward distance	l4 (mm)	1300
4.17	Ground clearance, centre of wheelbase	m(mm)	124
Performance			
5.1	Driving speed at forward/backward mode, load/unload	km/h	7~8
5.2	Driving speed at sideways mode, load/unload	km/h	6~7
5.3	Lifting speed, full/no load	mm/s	150/250
5.4	Lowering speed, full/no load	mm/s	195/160
5.5	Straight driving max. gradeability(load/unload)(S2-5min)	%	8/8
5.6	Gradeability, load/unload	%	8/8
5.7	Braking type		Electromagnetic
Driving			
6.1	Drive motor, S2=60	kW	2×8
6.2	Lift motor, S3=15%	kW	15
6.3	Battery voltage/capacity K5	(V)/(Ah)	48/560
6.4	Battery weight	kg	910
6.5	Steering System		Pure Electric Steering
Others			
7.1	Type of drive control		AC
7.2	Sound level at driver's ear	dB(A)	70
7.3	Battery replacement		Hoisting

Note: 1.Standard with pitch fork, optional fork sensing function 2.Standard model data, depending on the configuration will change

Mast Specification

Duplex Mast										
Model	MQC35	35-30	35-35	35-40	35-45					
Lift height	h3(mm)	3000	3500	4000	4500					
Mast extended height	h4(mm)	4135	4635	5135	5635					
Mast closed height	h1(mm)	2542	2792	3092	3392					
Free lift height	h2(mm)	0	0	0	0					
Triplex full-free Mast										
Model	MQC35	35-45	35-50	35-55	35-60	35-65	35-70	35-75	35-80	
Lift height	h3(mm)	4500	5000	5500	6000	6500	7000	7500	8000	
Mast extended height	h4(mm)	5635	6135	6635	7135	7635	8135	8635	9135	
Mast closed height	h1(mm)	2542	2709	2876	3043	3210	3377	3544	3811	
Free lift height	h2(mm)	1457	1624	1791	1958	2125	2292	2459	2726	

Product 2D View



Customers Cases

